

A SOLUTIONS PROVIDER  
**LEADING THE WAY**  
 In Plant Automation and Technology.



**Accu-Track**  
 ADVANTAGE

The Accu-Track Advantage™ uses patented technology and techniques developed over several years from an accumulation of installations on all brands, types and manufactures of asphalt plants.

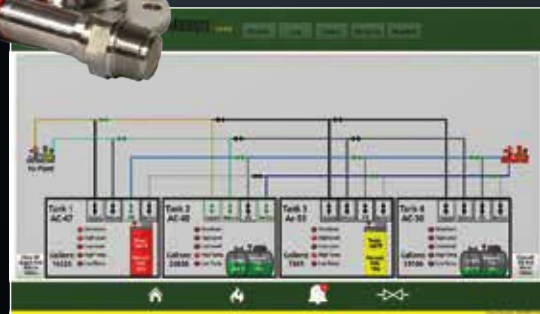


The Accu-Level™ makes it possible to never have to second-guess how much material is in your A.C. tanks or hotmix silos. The system monitors tank levels, alerting when an overflow is approaching.



**TANK TRACKER**  
 by STANSTEEL & HOTMIX PARTS

The Tank Tracker™ allows you to monitor specific operations of your plant. Completely mobile-friendly, the system can be operated on a computer, tablet or smart phone.



**Tank Manager**

The Tank Manager™ allows you to monitor and regulate all of your A.C. tanks with the push of a button from the control room, tank farm or any smart phone.

We offer engineering, new and used components, parts and repairs for all brands, and excellent customer service. That's why the only call you need to make is to Stansteel/Hotmix Parts & Service.



Anything for an Asphalt Plant.



Make sure to visit us at booth #2501

For more information  
 800-826-0223  
 Stansteel.com  
 HotmixParts.com

Raised On  
 Blacktop®

SEE YOU AT WORK.

*in Nashville!*

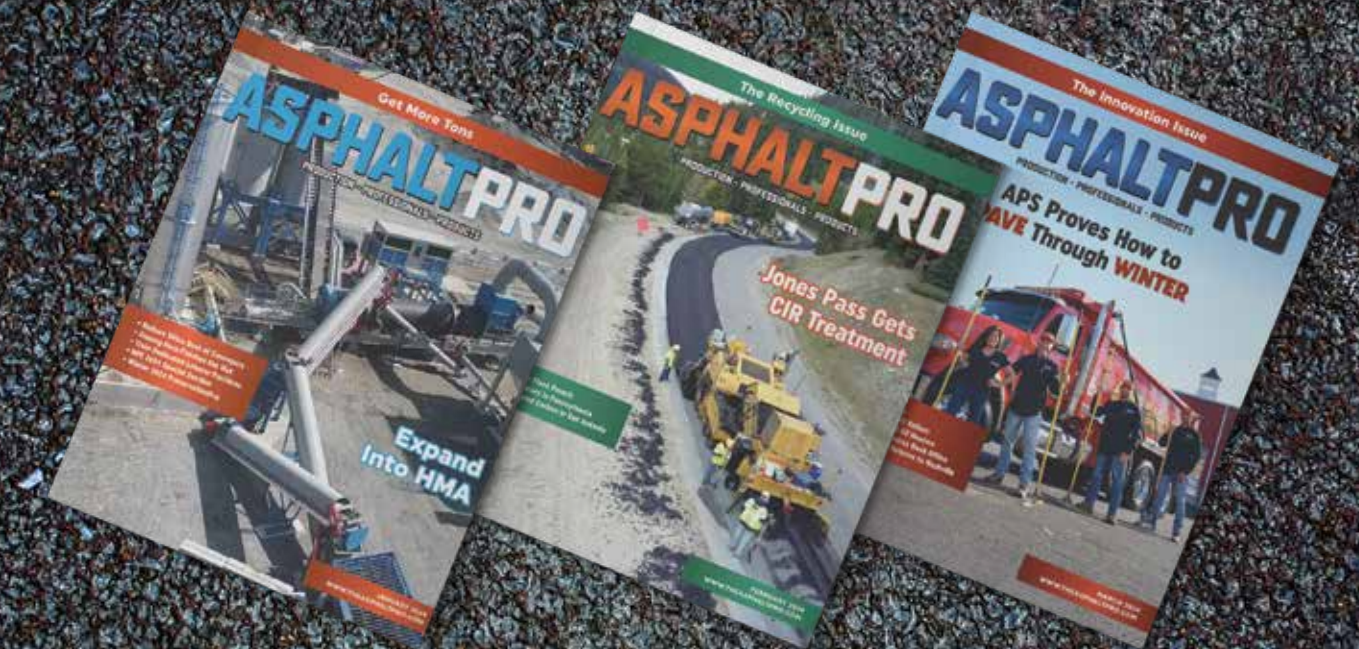


BOOTH #2631 - WORLD OF ASPHALT '24

**ASPHALTPRO**

PRODUCTION - PROFESSIONALS - PRODUCTS

WELCOME TO  
 WOA 2024.



Stop by Booth L1013 in the lobby.  
 Visit with AsphaltPro Magazine staff!  
[www.TheAsphaltPro.com](http://www.TheAsphaltPro.com)

Get Your Asphalt How-to at Booth L1013  
 Ask about our online training course, Asphalt Paving 101.



# RAP BOSS

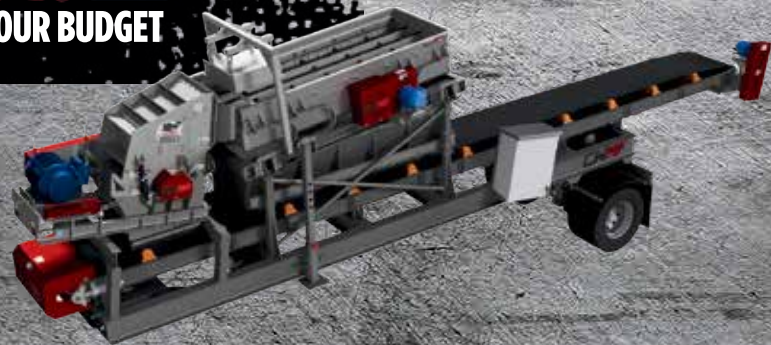
## UNLEASH THE EFFICIENCY



Our RAP Boss and RAP Boss Jr. allow hot mix and crushed asphalt producers to minimize material handling, reduce or eliminate RAP crushing costs, and reduce RAP product moisture.

# RAP BOSS JR

## CRUSHING LIMITS, NOT YOUR BUDGET



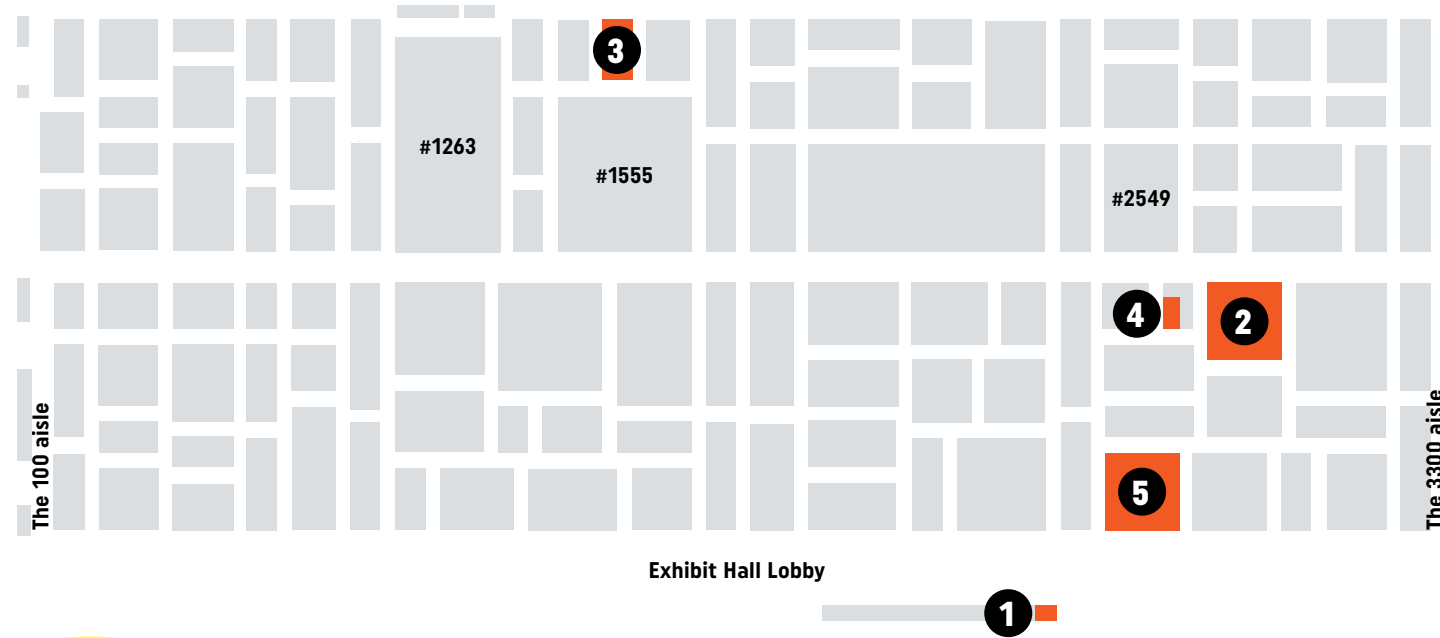
Scan Code To Revolutionize Your Asphalt Production Today!



www.cwmfcorp.com

# AsphaltPro Magazine Helps You Find the Bottom Line...

Level 3-Exhibit Hall



Seek out the companies who support your industry through their marketing dollars. Service providers and OEMs who invest in the asphalt industry are ready to help you at the World of Asphalt tradeshow. Stop by these booths to get information, products, and services to enhance your understanding and your bottom line.

**ADM—2429**  
Expert industry specialists will be on hand to demonstrate how to customize the perfect asphalt plant with standard ADM components to meet individual producer's needs.

**AMMANN AMERICAS—1516**  
Scale models of Ammann asphalt mixing plants will be available for review.

**ASPHALT MATERIALS—2616**  
Asphalt Materials' core business strength is the research and development of asphalt binders and emulsions for the asphalt industry since our formation in 1956.

**#1—ASPHALTPRO—L1013**  
We have information about our Asphalt Paving 101 online paving course at the booth.

**ASTEC INDUSTRIES—1263**  
M-Pack asphalt mixing plant, asphalt terminal, RX-505 cold planer, SB-3000 material transfer vehicle, RP-175 and RP-195 highway class asphalt pavers, CP130 paver, J20 Ranger jaw plant

**BLAW KNOX—1431**  
Blaw-Knox offers over 75 years of paving technology.

**#2—BOMAG—2731**  
Compaction, milling, paving equipment on display.

**BROCK—1043**  
BROCK will have a simple backdrop display staffed with knowledgeable industry veterans excited to visit with customers and friends.

**BUFFALO TURBINE—1717**  
Surface cleaning and preparation.

**COLORBIOTICS—2658**  
Additives for pavement preservation and maintenance.

**COMMAND ALKON—1941**  
See in-booth demos to learn how you can keep your operations and projects moving forward by digitizing, automating and improving with solutions from Command Alkon.

**#3—CWMF—1665**  
Check out the Honey Badger RAP crushing hammermill, 4-ton, patented silo batcher; and trunnion and tire display of our drums.

**DYNAPAC—2549**  
Dynapac North America, Fort Mill, South Carolina, features administrative, customer support, and parts distribution facilities for soil and asphalt rollers, compact equipment, pavers, and feeders.

**EAGLE—1931**  
See the new Eagle Crusher MaxRap® 25 Portable.

**GENCOR—1431**  
Gencor designs, engineers, and manufactures complete stationary and portable drum mix, batch plants, and components up to 700 TPH and more.

**HAULHUB—1751**  
Software and tech to streamline your asphalt operations.

**INNOPLAST—3343**  
Innoplast Inc., Garfield Heights, Ohio, makes products for vehicle, parking lot and facility protection.

**KENCO ENGINEERING—1739**  
Kenco alloys and TCI products are designed to extend wear life and reduce downtime.

**MEEKER—2063**  
Meeker will be showing its Freedom Air Series Reverse Air baghouse and Liquid Vision Tank valve control and level system.

**PAVEWISE—3341**  
Artificial Intelligence and data systems to improve your paving and quality control processes.

**PHCO—3202**  
Process Heating Co. will have animated videos showing how its products work, illustrating what sets its Lo-Density® electric heat apart from fossil-fuel burners.

**#4—RAISED ON BLACKTOP—2631**  
Raised on Blacktop is the merchandise and social media brand affiliated with American Pavement Specialists.

**RELIABLE—1901**  
Stop by to see the Vulcan burner from Reliable Asphalt Products, a single-source provider of new and used equipment.

**#5—STANSTEEL—2501**  
Stansteel-Hotmix Parts & Service will showcase the Look, Lock 'n Load safety loadout truck recognition system, Accu-Track, Tank Manager and more.

**TARMAC—2231**  
Stop by for information on asphalt plants and aggregate drying plants specializing in complete systems with control packages.

**TRANSTECH SYSTEMS—2528**  
See what "no tags" means! TransTech's PQI offers asphalt pavement density measurement without nuclear gauge regulatory training and certification.

**UPM—1713**  
Unique Paving Materials offers cold mix.

**WEILER—2349**  
Weiler offers equipment for heavy highway, commercial paving and quarry markets, including MTVs, commercial pavers, road wideners and more.

**WIRTGEN GROUP—1555**  
Wirtgen covers the entire road construction process chain: processing, mixing, paving, compacting and rehabilitating.

**WOMEN OF ASPHALT—L1001**  
Women of Asphalt is a national coalition supporting women in all aspects of the asphalt industry through mentoring, education, and advocacy, and by encouraging women to seek careers in the asphalt industry.

## Join Us For BOMAG Live in Nashville!

Scan the QR Code to Register!

OPENING BAND:

**THE GEORGIA THUNDERBOLTS**

HEADLINING BAND:

**THE KENTUCKY HEADHUNTERS**

Brought to you by: **BOMAG**



**WHEN:**  
March 25, 2024  
5 - 8 pm

**WHERE:**  
**Walk of Fame Park**  
(Across from the Country Music Hall of Fame and the Music City Convention Center)

**HOW DO I REGISTER?**  
Space is LIMITED!  
Scan the QR Code and complete the info to Register, then Pick up your Wristband at the BOMAG Booth #2731 on Monday during World of Asphalt!

**EVERYONE MUST HAVE A WRISTBAND TO ENTER!**

**WHO CAN ATTEND?**  
If you are registered as a customer attending the World of Asphalt trade show, you're invited to attend!